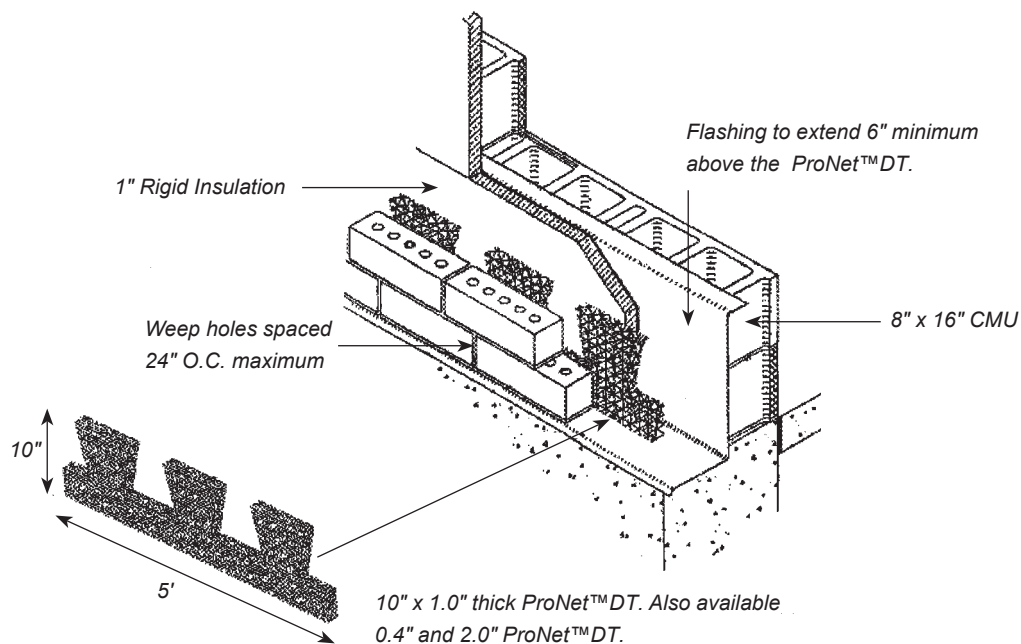
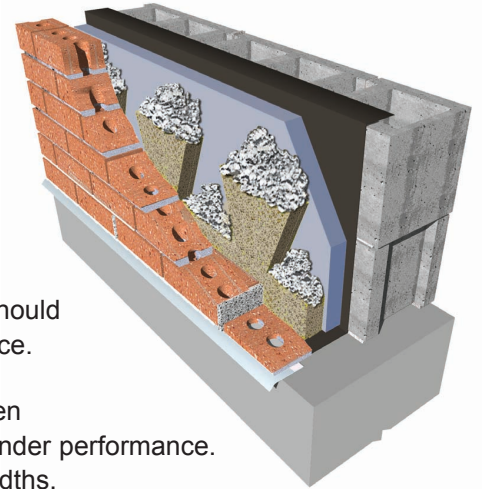


This package contains **ProNet™ DT**
 100 LF of 1" or 2" ProNet™ DT or 250 LF of 0.4" ProNet™DT

General Information

1. Fast and easy to use - no fasteners or adhesives, no special skills or tools. After the first one to two courses of bricks are laid, place a continuous row of *ProNet™ DT* in the cavity or collar joint on flashing (**trapezoidal side up**) against inside of outer wythe at base of wall (**see diagram**).
2. Install *ProNet™ DT* **directly on flashing** at base of wall, over all wall openings, shelf angles, sills or lentils.
3. Flashing should extend from bottom to 6" above the top of *ProNet™ DT*, as should any other materials used to fill space between *ProNet™ DT* and inside cavity surface.
4. If 1" or 2"-thick *ProNet™ DT* is used, no more than 3/8" should be left between *ProNet™ DT* and cavity's inside surface (flashing or filler). A loose fit will not hinder performance. *ProNet™ DT* is compressible, if necessary, to allow for variations in wall-cavity widths.



ProNet™ DT should be installed with properly specified weep hole/ flashing systems.

For Technical Support or to Report Defective Product: Please Call 1-800-659-4731